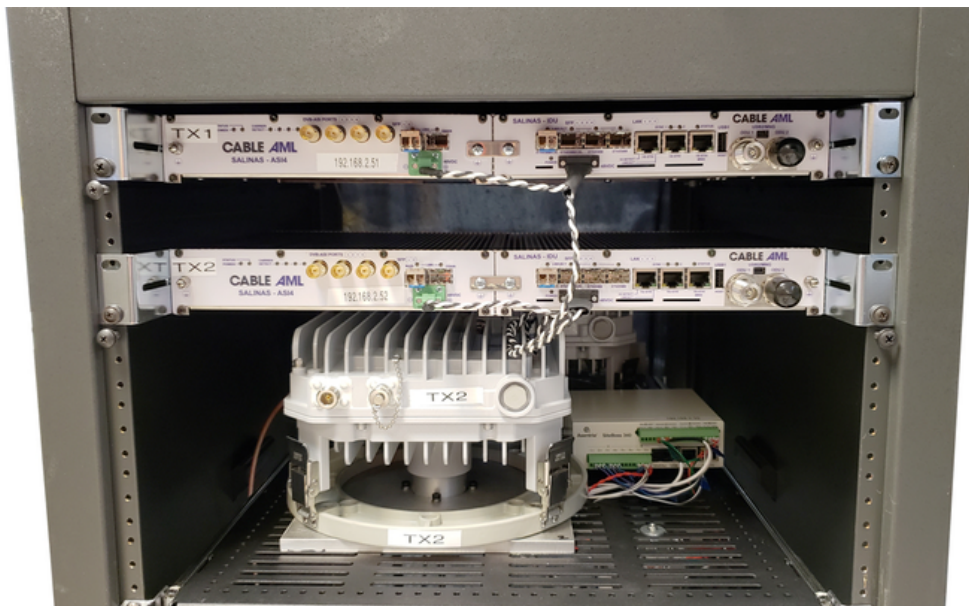


## Cinet installs broadband microwave link

Cable AML has fabricated and delivered a digital STL (Studio to Transmitter Link) to feed a network of synchronized Digital Television transmitters.

The 8 GHz STL is preferred over fiber for this application because of the low latency and also the ability to control and maintain the latency required for Synchronized digital television transmission.



The microwave link guarantees synchronization of multiple TV transmitters with overlapping coverage area to ensure operation without mutual interference.

The redundant system is one of several point-to-point links designed to operate at distances from 2 km to 40 km.

**Explore Cable AML Solutions Now**  
**Contact us at: [sales@cableaml.com](mailto:sales@cableaml.com)**

