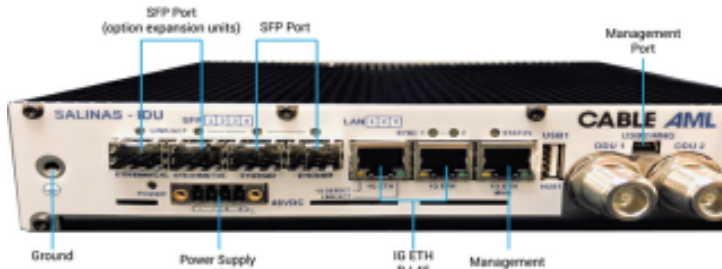
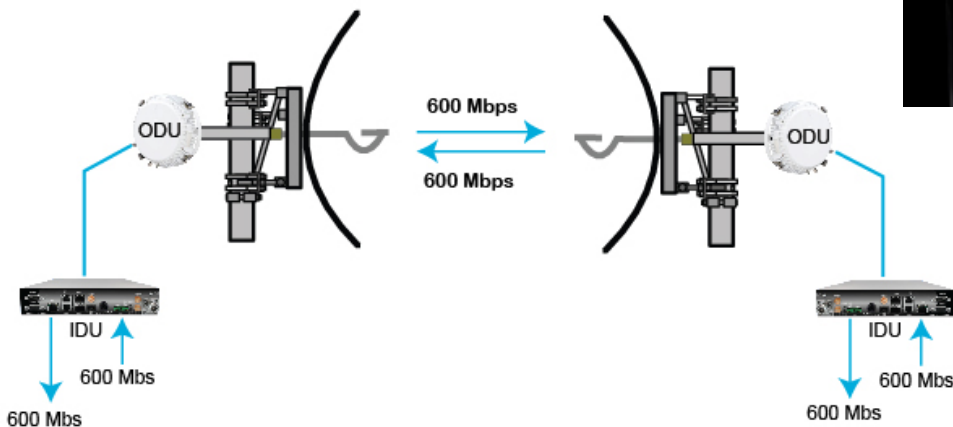


World Leader in Wireless Communications

High capacity (up to 2400 Mbps) IP Microwave links for licensed bands



High Capacity Salinas IPLINK-600



- 600 Mbps full duplex in 80 MHz channel bandwidth
- Available in all licensed frequency bands from 4.5 to 42 GHz
- Ultra-low latency & jitter in all ACM modes
- Advanced Adaptive Coding & Modulation(AACM)
- Secure management via browser and SSH and SNMP
- AES-256 Encryption
- Supported interfaces of Fast/Gig Ethernet, E1/T1 and ASI
- ASI provided with optional timing synchronization interface
- Hybrid systems supporting different interface combinations

Explore Cable AML Solutions Now
Contact us at: sales@cableaml.com

Experience



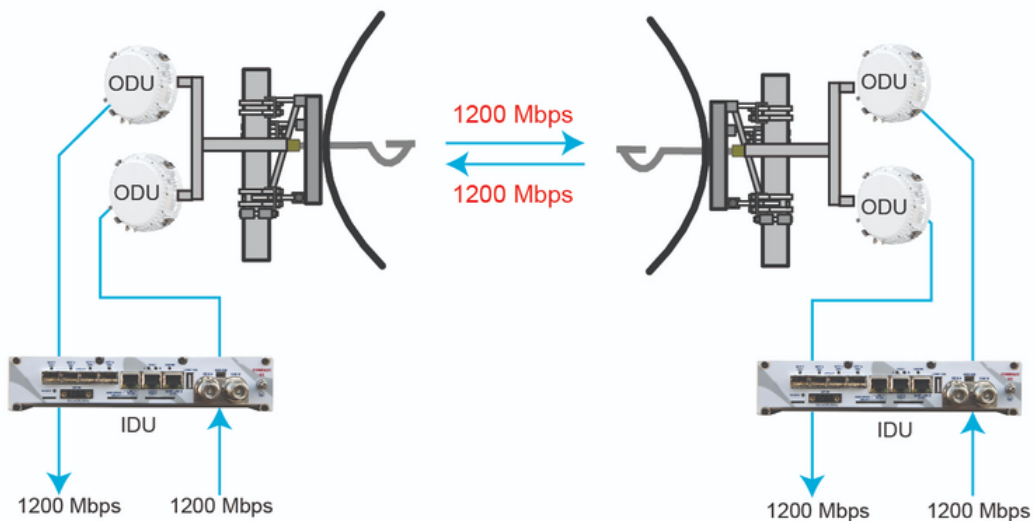
Quality



Customer focus

High capacity (up to 2400 Mbps) IP Microwave links for licensed bands

Salinas IPLINK Ultra High Capacity 1200

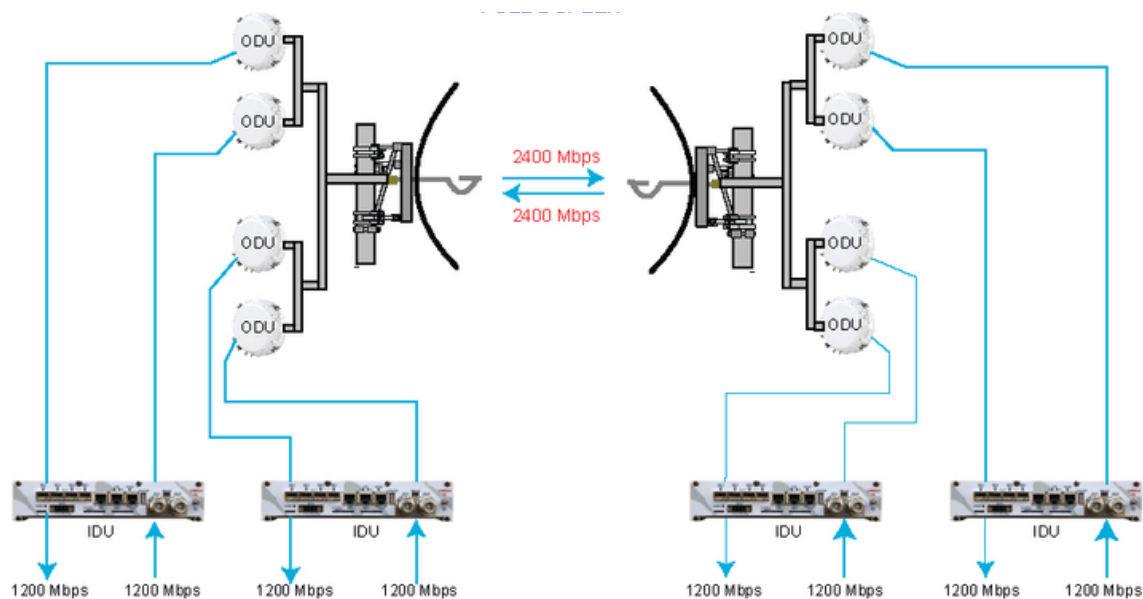


- Up to 1200 Mbps Capacity full duplex in a single 80 MHz channel
- Cross Polarization Interference Cancellation (XPIC)
- Configurable as 1+1 Protection or 2+0 Aggregation
- Hitless and Error-less Adaptive Coding and Modulation (ACM)
- AES 128-256 Encryption
- HeaderCompression
- Remotely Configurable
- Support RADIUS Server authentication
- Split Mount (IDU/ODU)
- Supported interfaces of Fast/Gig Ethernet, E1/T1 and ASI
- ASI provided with optional timing synchronization interface
- Hybrid systems supporting different interface combinations

Explore Cable AML Solutions Now
Contact us at: sales@cableaml.com

High capacity (up to 2400 Mbps) IP Microwave links for licensed bands

Salinas IPLINK Ultra High Capacity 2400



- Up to 2400 Mbps Capacity full duplex in two 80 MHz channels
- Cross Polarization Interference Cancellation (XPIC)
- Hitless and Errorless Adaptive Coding and Modulation (ACM)
- AES 128-256 Encryption
- Header Compression
- Remotely Configurable
- Support RADIUS Server authentication
- Split Mount (IDU/ODU) Supported interfaces of Fast/Gig Ethernet, E1/T1 and ASI
- ASI provided with optional timing synchronization interface
- Hybrid systems supporting different interface combinations

Explore Cable AML Solutions Now
Contact us at: sales@cableaml.com