

## OTX23-001 OUTDOOR BROADBAND TRANSMITTER

- **Broadband Transmitter, AM, FM, Digital Capability**
- **Can Feed Multiple Receivers**
- **Modular Design, Upgradeable**
- **Point-to-Point or Point-to-Multi-point Applications**



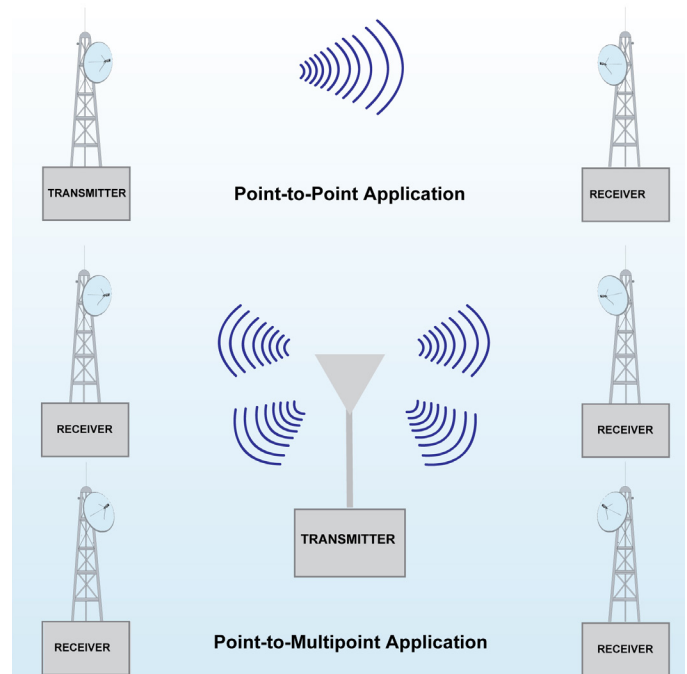
### PRODUCT APPLICATION:

The OTX23-001 Transmitter is an outdoor, solid state, broadband transmitter designed to implement high quality, cost-effective microwave links for transporting AM, FM, or digital TV channels as well as data.

This transmitter can be used to feed a single link or several links simultaneously. The OTX23-001 features operating diagnostics such as output signal level monitoring, phase-lock status and power supply voltages. Remote diagnostics monitoring is offered as an option.

The transmitter incorporates an Automatic Gain Control (AGC) circuit for gain control over its operating temperature range, and a State-of-the-Art low-noise crystal-controlled reference oscillator and solid state GaAs power amplifier for best reliability and performance.

Designed for many years of trouble-free operation in an outdoor environment, the OTX23-001 can be easily upgraded to the higher power units of the OTX23 family.



# Product Specification<sup>1</sup>



<b>Transmitter</b>																								
Output Frequency <sup>2</sup> :	54 to 490 MHz																							
Input Level (35 channel loading):	+20 dBmV typical (-29 dBm)																							
Output Frequency <sup>2</sup> :	23.0 to 23.5 GHz																							
Output Level	<table border="1"> <thead> <tr> <th rowspan="2">Channels</th> <th colspan="3">MAIN OUTPUT</th> </tr> <tr> <th>dBm/Ch</th> <th>C/N (dB)</th> <th>C/CTB (dB)</th> </tr> </thead> <tbody> <tr> <td>12</td> <td>-2.5</td> <td>62.0</td> <td>60.0</td> </tr> <tr> <td>21</td> <td>-5.0</td> <td>58.0</td> <td>60.0</td> </tr> <tr> <td>35</td> <td>-7.5</td> <td>57.0</td> <td>60.0</td> </tr> <tr> <td>72</td> <td>-10.5</td> <td>54.0</td> <td>60.0</td> </tr> </tbody> </table>	Channels	MAIN OUTPUT			dBm/Ch	C/N (dB)	C/CTB (dB)	12	-2.5	62.0	60.0	21	-5.0	58.0	60.0	35	-7.5	57.0	60.0	72	-10.5	54.0	60.0
Channels	MAIN OUTPUT																							
	dBm/Ch	C/N (dB)	C/CTB (dB)																					
12	-2.5	62.0	60.0																					
21	-5.0	58.0	60.0																					
35	-7.5	57.0	60.0																					
72	-10.5	54.0	60.0																					
Normal Gain <sup>3</sup> :	24 dB																							
Frequency Response	±1 dB																							
Frequency Stability:	0.0005%																							
Input Return Loss:	15 dB																							
Input Connector:	Type "F"																							
Output Return Loss:	18 dB																							
Output Connector:	WR-28 Waveguide																							
Temperature Range:	-40° to 120°F (-40° to 49°C)																							
Humidity:	100% max.																							
Primary Power:	60/120/240 VAC @ 50/60Hz or +12/+24 VDC (per customer spec)																							
Power Consumption:	95 VA RMS																							
Mounting:	Antenna Pole																							
Weight:	45 lbs. (20.5 kg)																							
Dimensions:	16" W x 12" H x 7" D (48.26 cm x 17.78 cm x 50.88 cm)																							

<sup>1</sup> Specifications subject to change without prior notice.

<sup>2</sup> Other frequencies available.

<sup>3</sup> Gain may be varied with 10 dB attenuator.