

## OTX-005 OUTDOOR BROADBAND TRANSMITTER

- **Broadband Transmitter with 80 Channel Capability**
- **Can Feed One Link at 10 Miles or Four Links of 6 Miles Each**
- **Outdoor Enclosure**
- **Modular Design**
- **Digital Ready**



### PRODUCT APPLICATION:

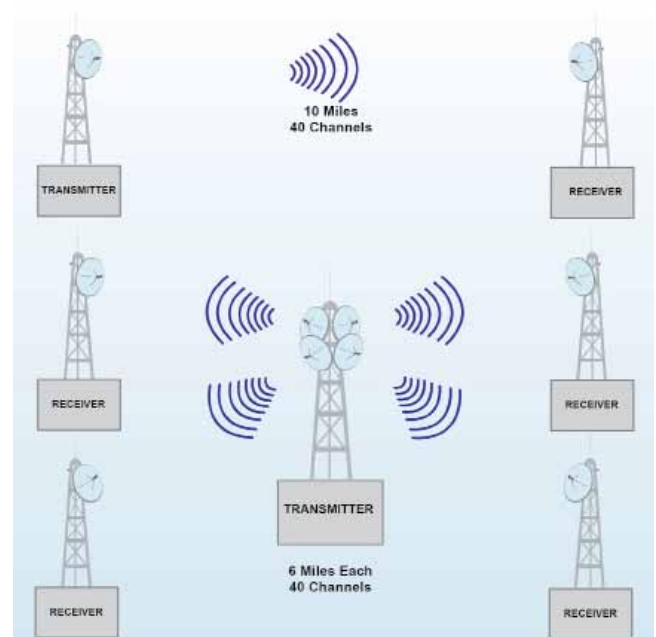
The OTX-005 Transmitter is an outdoor, solid state, broadband transmitter designed to implement high quality, cost-effective microwave links for transporting up to 80 television channels.

This transmitter can be used to feed a single link or several links simultaneously. A typical application example is a single 10-mile (16 km) link with 40 channel loading or four simultaneous links of 6 miles (9.6 kilometers) each.

The OTX-005 features operating diagnostics such as output signal level monitoring, phase-lock status and power supply voltages. Remote diagnostics monitoring is offered as an option.

The transmitter incorporates Automatic Gain Control (AGC) to maintain constant gain over the operating temperature range, a low-noise crystal-controlled reference oscillator and solid state GaAs power amplifier for best reliability and performance.

Designed for many years of trouble-free operation, the OTX-005 can be upgraded to the higher power OTX-005+.



# Product Specification<sup>1</sup>

# CABLE AML

<b>Transmitter</b>																					
Input Frequency:	54 to 552 MHz																				
Nominal Input Level for 12 TV:	+24 dBmV (-25dBm) per channel																				
Output Frequency <sup>2</sup> :	12700.5 to 13198.5 MHz																				
Output Level for 65 dB C/CTB:	<table border="1"><thead><tr><th>Channels</th><th>dBm/Channel</th><th>C/N (dB)</th></tr></thead><tbody><tr><td>12</td><td>2.0</td><td>65.0</td></tr><tr><td>21</td><td>-0.5</td><td>62.5</td></tr><tr><td>35</td><td>-3.0</td><td>60.0</td></tr><tr><td>60</td><td>-5.5</td><td>57.5</td></tr><tr><td>80</td><td>-7.0</td><td>56.0</td></tr></tbody></table>			Channels	dBm/Channel	C/N (dB)	12	2.0	65.0	21	-0.5	62.5	35	-3.0	60.0	60	-5.5	57.5	80	-7.0	56.0
	Channels	dBm/Channel	C/N (dB)																		
	12	2.0	65.0																		
	21	-0.5	62.5																		
	35	-3.0	60.0																		
	60	-5.5	57.5																		
80	-7.0	56.0																			
Normal Gain <sup>3</sup> :	18 dB																				
Frequency Response:	±1 dB																				
Frequency Stability:	0.0005%																				
Input Return Loss:	15 dB																				
Input Connector:	5/8" X 24 Female, "F" Female adapter included																				
Output Return Loss:	18 dB																				
RF Output Connector	WR-75 Waveguide																				
Temperature Range:	32° to 110°F (0 to 43 °C)																				
Humidity:	100% max. noncondensing																				
Primary Power:	210-240 VAC @ 50/60Hz or per customer spec.																				
Power Consumption:	100 Watts																				
Mounting:	Antenna Pole Mount																				
Weight:	30 lbs. (13.6 kg)																				
Dimensions:	12" W x 11" H x 20" D (305 x 280 x 495 mm)																				

<sup>1</sup> Specifications subject to change without prior notice.

<sup>2</sup> For Group C. Other frequencies available.

<sup>3</sup> Gain may be varied with 10dB attenuator.