

ITX-005D INDOOR BROADBAND TRANSMITTER

- **Dual Redundant Broadband Transmitter with 80 Channel Capability**
- **Can Feed Two links at 20 Miles each or Four Links at 15 Miles each with 40 Channel Loading**
- **Upgradable, Modular Design**
- **Requires only 31.5 inches of Indoor Rack Space**
- **Fully Redundant with Automatic or Manual switching and Local and/or Remote Control**
- **Optional remote diagnostics (PC compatible)**
- **Digital Ready**



PRODUCT APPLICATION:

The ITX-005D is a fully redundant solid state broadband transmitter designed to implement high quality, high power microwave links for transporting up to 80 television channels.

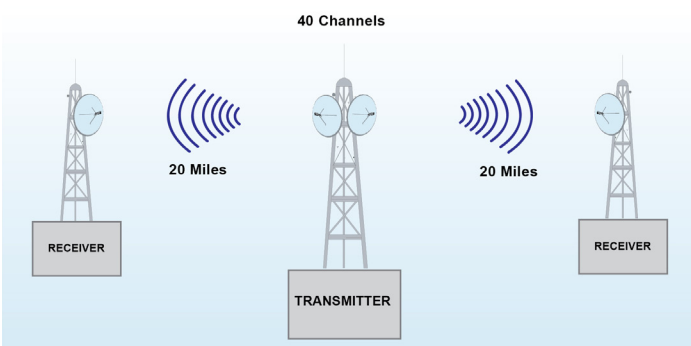
This transmitter can be used to feed two or more links simultaneously. A typical application example would be two simultaneous links of 20 miles (32km) each, or four simultaneous links of 15 miles (24km) each, (calculated at 40 channel loading).

The ITX-005D is made up of two ITX-005 transmitter units and a redundancy controller, all rack mountable for convenience and ease of access to components.

The ITX-005D incorporates the latest Gallium Arsenide power amplifier technology to deliver a clean, reliable signal.

Output signal monitoring as well as operation diagnostic measurements are easily performed without interrupting operation.

Designed for many years of trouble-free operation, the ITX-005D can be field upgraded to higher power units of the ITX "D" family.



Product Specification¹

CABLE AML

Transmitter																					
Input Frequency ² :	54 to 550 MHz																				
Nominal Input Level for 12 TV:	+13 dBmV (-36 dBm)																				
Output Frequency ² :	12.7 to 13.25 GHz																				
Output Level for 65 dB C/CTB:	<table border="1"> <thead> <tr> <th>Channels</th> <th>dBm/Channel</th> <th>C/N (dB)</th> </tr> </thead> <tbody> <tr> <td>12</td> <td>2.0</td> <td>65.0</td> </tr> <tr> <td>21</td> <td>-0.5</td> <td>62.5</td> </tr> <tr> <td>35</td> <td>-3.0</td> <td>60.0</td> </tr> <tr> <td>60</td> <td>-5.5</td> <td>57.5</td> </tr> <tr> <td>80</td> <td>-7.0</td> <td>56.0</td> </tr> </tbody> </table>			Channels	dBm/Channel	C/N (dB)	12	2.0	65.0	21	-0.5	62.5	35	-3.0	60.0	60	-5.5	57.5	80	-7.0	56.0
	Channels	dBm/Channel	C/N (dB)																		
	12	2.0	65.0																		
	21	-0.5	62.5																		
	35	-3.0	60.0																		
	60	-5.5	57.5																		
80	-7.0	56.0																			
Normal Gain ³ :	32 dB																				
Frequency Response:	±1 dB																				
Frequency Stability:	0.0005%																				
Input Return Loss:	15 dB																				
Input Connector:	Type "F"																				
Output Return Loss:	18 dB																				
RF Output Connector	WR-75 Waveguide																				
Temperature Range:	60° to 100°F (16° to 32°C)																				
Humidity:	95% max.																				
Primary Power:	120/240 VAC, 50/60Hz (per customer specification)																				
Power Consumption:	750 VA RMS																				
Mounting:	19" EIA Standard Relay Rack																				
Weight:	78.0 lb. (35.5 kg)																				
Dimensions:	3 @ 19" rack width x 7" H x 20" D 3 @ (48.26cm rack width x 17.78cm H x 50.88cm D)																				

¹ Specifications subject to change without prior notice.

² For Group C. Other frequencies available.

³ Gain may be varied with 10dB attenuator.