

## OTX-050 OUTDOOR BROADBAND TRANSMITTER

- **High Power Broadband Transmitter with 80 Channel Capacity**
- **Can Feed One link of 25 Miles or Four links of 18 Miles with 40 Channel Loading**
- **Solid State Replacement for Multiple Channelized Transmitters**
- **Optional remote diagnostics (PC compatible)**
- **Digital Ready**



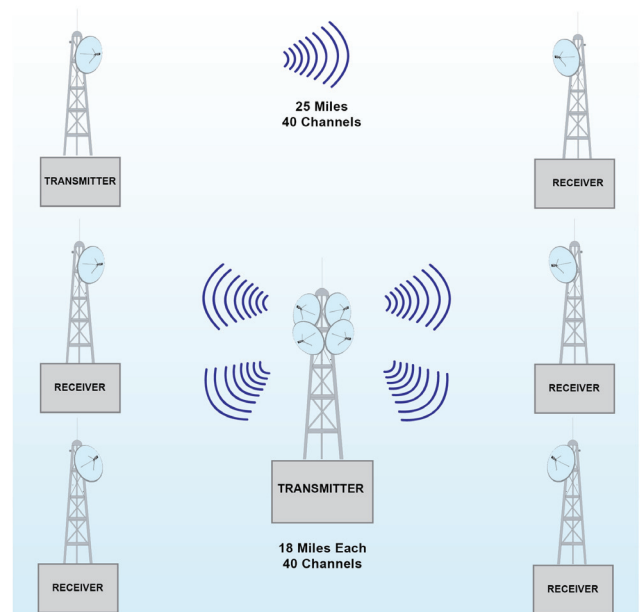
### PRODUCT APPLICATION:

The OTX-050 is a solid state broadband transmitter designed to implement high quality, cost-effective microwave links for transporting up to 80 television channels.

This transmitter can be used to feed a single link or several links simultaneously. A typical application example would be a single 25-mile link (40 km) with 40 channel loading, or 4 simultaneous links of 18 miles (29 km) each.

This transmitter can be used to replace older channelized units. The OTX-050 is an outdoor unit designed for tower mounting. Designed for many years of trouble-free operation, it incorporates the latest Gallium Arsenide power amplifier technology to deliver a clean, reliable signal.

Output signal monitoring as well as operation diagnostic measurements are easily performed without interrupting operation.



# Product Specification<sup>1</sup>

# CABLE AML

<b>Transmitter</b>																			
Input Frequency:	54 to 550 MHz																		
Input Level (80 channel loading):	+14 dBmV (-35 dBm per Channel)																		
Output Frequency:	12.7 to 13.25 GHz																		
Output Level for 65 dB C/CTB:	<table border="1"><thead><tr><th>Channels</th><th>dBm/Channel</th><th>C/N (dB)</th></tr></thead><tbody><tr><td>12</td><td>14</td><td>67.0</td></tr><tr><td>21</td><td>11.5</td><td>64.5</td></tr><tr><td>35</td><td>9.0</td><td>62.0</td></tr><tr><td>60</td><td>6.5</td><td>59.5</td></tr><tr><td>80</td><td>5.0</td><td>58.0</td></tr></tbody></table>	Channels	dBm/Channel	C/N (dB)	12	14	67.0	21	11.5	64.5	35	9.0	62.0	60	6.5	59.5	80	5.0	58.0
Channels	dBm/Channel	C/N (dB)																	
12	14	67.0																	
21	11.5	64.5																	
35	9.0	62.0																	
60	6.5	59.5																	
80	5.0	58.0																	
Normal Gain:	40 dB																		
Frequency Response:	±1 dB																		
Frequency Stability:	0.0005%																		
Input Return Loss:	15 dB																		
Input Connector:	5/8" X 24																		
Output Return Loss:	18 dB																		
UHF Output Connector:	WR-75 Waveguide																		
Temperature Range:	-40° to 113°F (-40° to 45°C)																		
Humidity:	100% max.																		
Primary Power:	120 VAC, 50/60 Hz																		
Power Consumption:	300 VA RMS																		
Mounting:	4.5" PIPE																		
Weight:	260 lbs. (118 kg)																		
Dimensions:	20" rack Width x 24" Height x 19" Depth (51cm W x 61cm H x 48cm D)																		

<sup>1</sup> Specifications subject to change without prior notice.