

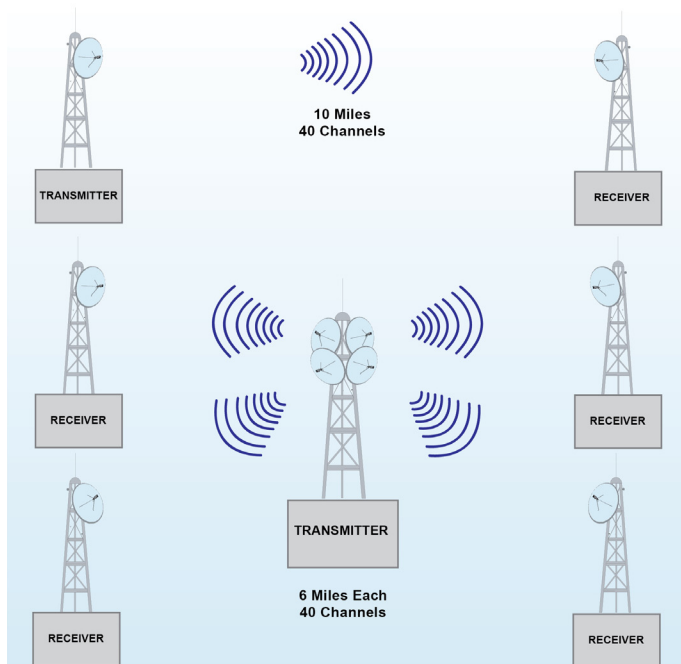
ITX18-005 INDOOR BROADBAND TRANSMITTER

- **Broadband Transmitter with 72 Channel Capability**
- **Can Feed Four Receivers at 6 Miles Each**
- **Upgradable, Modular Design**
- **Requires only 7 inches of Indoor Rack Space**



PRODUCT APPLICATION:

The ITX18-002 is a solid state broadband transmitter designed to implement high quality, cost-effective microwave links for transporting up to 72 television channels.



This transmitter can be used to feed a single link, or several links simultaneously. A typical application example would be a single 10-mile (16-kilometer) link with 40 channel loading, or four simultaneous links of 4 miles (6.4 kilometers) each.

The ITX18-005 is offered in an indoor rack mounted version, for convenience and ease of access to components. It incorporates the latest Gallium Arsenide power amplifier technology to deliver a clean, reliable signal.

Output signal monitoring and operation diagnostic measurements are easily performed without interrupting operation.

Designed for many years of trouble-free operation, the ITX18-005 can be field upgraded to higher power units of the ITX18 family of transmitters.

Product Specification¹



Transmitter																
Input Frequency:	54 to 552 MHz															
Input Level:	20 dBmV															
Output Signal Frequency:	17.70 to 18.30 GHz															
Output Level for 65 dB C/CTB:	<table border="1"> <thead> <tr> <th>Channels</th> <th>dBm/Channel</th> <th>C/N (dB)</th> </tr> </thead> <tbody> <tr> <td>12</td> <td>4.5</td> <td>65.0</td> </tr> <tr> <td>21</td> <td>2.0</td> <td>62.5</td> </tr> <tr> <td>35</td> <td>-0.5</td> <td>60.0</td> </tr> <tr> <td>72</td> <td>-3.5</td> <td>57.0</td> </tr> </tbody> </table>	Channels	dBm/Channel	C/N (dB)	12	4.5	65.0	21	2.0	62.5	35	-0.5	60.0	72	-3.5	57.0
Channels	dBm/Channel	C/N (dB)														
12	4.5	65.0														
21	2.0	62.5														
35	-0.5	60.0														
72	-3.5	57.0														
Normal Gain ² :	31 dB															
Frequency Response:	±1.0 dB															
Frequency Stability:	0.0005%															
Input Return Loss:	15 dB															
Input Connector:	Type "F"															
Output Return Loss:	18 dB															
Output Connector	WR-42 Waveguide															
Temperature Range:	60° to 100°F (16° to 32°C)															
Humidity	95% max.															
Primary Power:	120/240 VAC, 50/60Hz (per customer specification)															
Power Consumption:	175 VA RMS															
Mounting:	EIA Standard Relay Rack															
Weight:	30 lbs. (13.6 kg)															
Dimensions:	19" rack width x 12.5" H x 24" D (48.3cm W x 31.8cm H x 61cm D)															

¹ Specifications subject to change without prior notice.

² Other frequencies available.