

## ITX-100 INDOOR BROADBAND TRANSMITTER

- **Broadband Transmitter with 80 Channel Capability**
- **Can Feed One Link of 25 Miles or Four Links of 20 Miles each with 80-Channel Loading**
- **Requires only 15 inches of Indoor Rack Space**
- **Digital Ready**



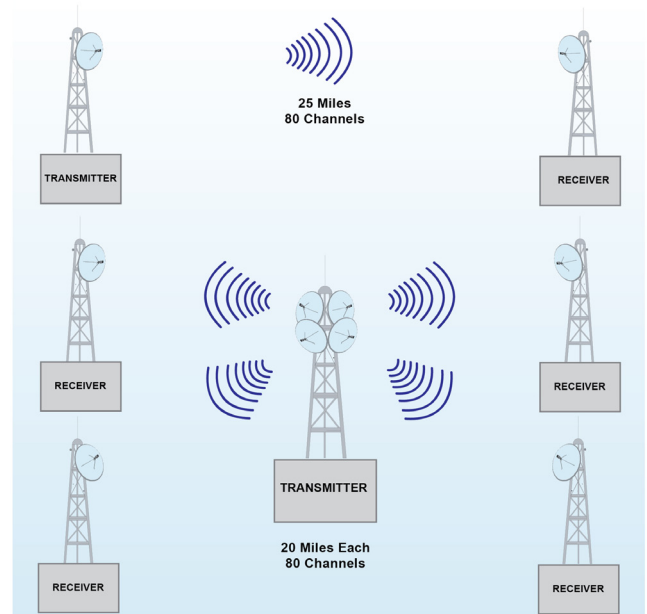
### PRODUCT APPLICATION:

The ITX-100 is a solid state broadband transmitter designed to implement high quality, cost-effective microwave links for transporting up to 80 television channels.

This transmitter can be used to feed a single link or several links simultaneously. A typical application example would be a single 25-mile (40 km) link with 80 channel loading, or 4 simultaneous links of 20 miles (32 km) each.

This transmitter can be used alone or in pairs to replace older channelized units. The ITX-100 is rack mounted for convenience and ease of access to components. It incorporates the latest Gallium Arsenide power amplifier technology to deliver a clean, reliable signal.

Output signal monitoring and diagnostic measurements are available locally or remotely via Internet.



# Product Specification<sup>1</sup>



<b>Transmitter</b>																					
Input Frequency <sup>2</sup> :	54 to 550 MHz																				
Nominal Input Level for 12 TV:	+21 dBmV (-28 dBm per channel)																				
Output Frequency <sup>2</sup> :	12.7 to 13.25 GHz																				
Output Level for 65 dB C/CTB:	<table border="1"> <thead> <tr> <th>Channels</th> <th>dBm/Channel</th> <th>C/N (dB)</th> </tr> </thead> <tbody> <tr> <td>12</td> <td>16.5</td> <td>67.0</td> </tr> <tr> <td>21</td> <td>14.0</td> <td>64.5</td> </tr> <tr> <td>35</td> <td>11.5</td> <td>62.0</td> </tr> <tr> <td>60</td> <td>9.0</td> <td>59.5</td> </tr> <tr> <td>80</td> <td>7.5</td> <td>58.0</td> </tr> </tbody> </table>			Channels	dBm/Channel	C/N (dB)	12	16.5	67.0	21	14.0	64.5	35	11.5	62.0	60	9.0	59.5	80	7.5	58.0
	Channels	dBm/Channel	C/N (dB)																		
	12	16.5	67.0																		
	21	14.0	64.5																		
	35	11.5	62.0																		
	60	9.0	59.5																		
80	7.5	58.0																			
Normal Gain <sup>3</sup> :	36 dB																				
Frequency Response:	±1 dB																				
Frequency Stability:	0.0005%																				
Input Return Loss:	15 dB																				
Input Connector:	Type "F"																				
Output Return Loss:	18 dB																				
RF Output Connector	WR-75 Waveguide																				
Temperature Range:	60° to 100°F (16° to 32°C)																				
Humidity:	95% max.																				
Primary Power:	120/240 VAC, 50/60Hz (per customer specification)																				
Power Consumption:	375 VA RMS																				
Mounting:	19" EIA Standard Relay Rack																				
Weight:	60 lb. (27.2 kg)																				
Dimensions:	19" W x 7" H x 20" D (48.26cm W x 17.78cm H x 50.88cm D)																				

<sup>1</sup> Specifications subject to change without prior notice.

<sup>2</sup> For Group C. Other frequencies available.

<sup>3</sup> Gain may be varied with 10dB attenuator.